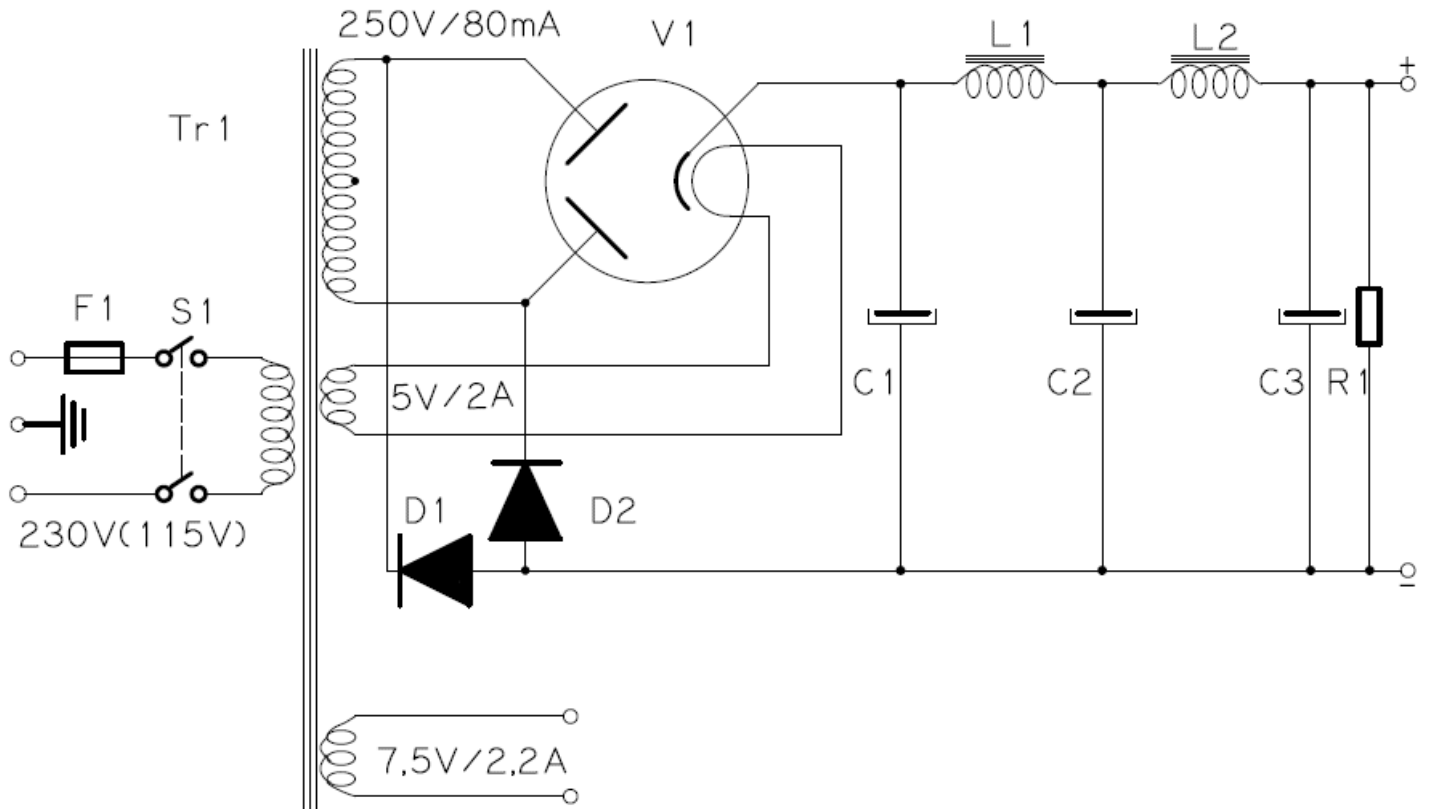


POWER SUPPLY FOR RIAA PREAMP - HV



- F1 = 0,5A sb (1A sb)
- V1 = 5V4G
- L1 = 5H
- L2 = 4H
- C1 = 47uF/400V
- C2 = 270uF/400V
- C3 = 150uF/400V
- R1 = 330k/1W
- D1=D2 = CSD-01060A

HEATER 6,3V PS:

